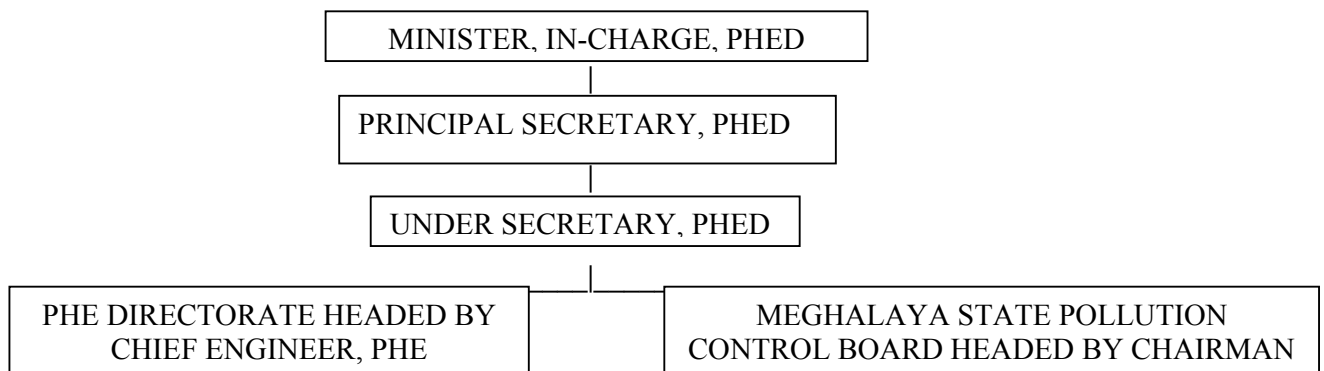


Sub-Section (1)(b)(i) of Section 4 of RTIA 2005

The Particulars of its Organization, Functions and Duties.

1. The Public Health Engineering Department was under the Administration of PWD (R&B) with its Directorate as a separate wing of the PWD(R&B) headed by Additional Chief Public Health Engineer, Meghalaya, Shillong. The Public Health Engineering Department was separated from PWD (R&B) and functioned independently since 2nd April 1972. Simultaneously, the post of Additional Chief Public Health Engineer, Meghalaya, Shillong was upgraded to the post of Chief Public Health Engineer, Meghalaya, which also functioned as Ex-Officio Additional Secretary to the Government of Meghalaya, PHE Department with effect from 13th December, 1973, under the Secretary, Public Health Engineering Department .
2. The Public Health Engineering Department, initially functioned with the PHE Directorate consisting of one Chief Engineer, and 2(two) numbers of working Divisions i.e.PHE Hills Division,Shillong and PHE Tura Division, Tura. Since then, the Department has come a long way to presently having one Chief engineer, PHE, 5 Addl. Chief Engineers (Plus one post for deputation to Chairman, Meghalaya State Pollution Control Board), 5 (five) Circles, 17(seventeen) working Divisions and 37(thirty seven) working Sub-Divisions. Among these only 1(one) Sub-Division (GSWS Distribution Sub-Division) is yet to function.
3. The organizational structure of PHED is as follows



4. The main objective of the Public Health Engineering Department is to ensure proper planning and management of the Water Supply and sanitation sector of the state with emphasis on provision of necessary infrastructure and civic amenities including provision of healthy living conditions in rural and urban areas of the State.
5. The aim of the Department is to see that all the Urban centres, rural habitations, Schools, and Anganwadi centres of the State are provided with safe drinking water supply, and in rural areas sanitation facilities are provided. In order to achieve this, the Department is implementing different schemes under the

Centrally sponsored Accelerated Rural Water Supply Programme (ARWSP), Central Sector Swajaldhara Programme, Centrally sponsored Rural Sanitation Programme-Total Sanitation Campaign, and State Plan schemes.

6. The Public Health Engineering Department formulates Policies and Programmes and in this connection, co-ordinates, supervises and monitors the implementation of the various schemes towards realization of the stated objectives.